



FY2017 Report to the Community

Saint Louis Mental Health Board

July 1, 2016 to June 30, 2017





Jama Dodson
Executive Director



Carolyn Jackson
Chair



Roy Wilson
Retired Chair

Dear Friends,

The past fiscal year has been alternately, challenging and energizing marked by three major changes:

1. New MHB Logo. After a market study was done with the help of a consultant, it was clear that there was a need to update our brand identity to reflect the reality that with the addition of the Children's Fund and various federal grants, MHB was no longer investing strictly in mental health services. The initials "MHB" are well-known and respected by our stakeholders and are not so limiting as the full name. Therefore, the new logo approved by the Board is a stylized version of our initials. This annual report introduces the new logo with tagline (see the comparison above).

2. Prevention Symposium. At a conference in New York City, Board Chair Dr. Roy Wilson met researcher, J. David Hawkins, Ph.D., with the University of Washington, who is an expert on evidence based prevention programs shown to be effective at preventing behavioral health problems in youth. Resulting from that connection, MHB, with several co-sponsors, hosted a symposium entitled, "Nurturing Healthier Kids Through Prevention." Although almost 200 service providers and funders attended the symposium in October 2016, the most important result was to focus attention on the effectiveness of evidence based prevention programs at addressing problem behavior in youth.

3. Our Board Chair Dr. Roy Wilson Relocated. After 24 dedicated years of service as a Trustee of MHB, Board Chair, Dr. Roy Wilson, relocated to South Carolina. His knowledge and expertise as a psychiatrist, as well as his calm, centered presence will be greatly missed! However, we were fortunate that our Vice-Chair, Carolyn Jackson, quickly stepped into the role of Chair. As a result, our Board of Trustees continued to move forward without pausing in it's important work.

Most important of all, MHB continues to invest in crucial social and behavioral health services for children and adults in the City of St. Louis in order to build an equitable, thriving community. In total, 12,872 individuals were served in programs funded with \$11.8 million invested from property taxes and federal programs. On behalf of MHB I am delighted to present this FY 2017 Annual Report to the community.

Sincerely,

Jama Dodson
Jama Dodson
Executive Director



The Saint Louis Mental Health Board (MHB)

is a special taxing authority charged with collecting and distributing two separate tax funds (Community Mental Health Fund and Community Children's Services Fund) for purposes consistent with Missouri State Statutes and approved by the voters.

In 1994, voters in the City of St. Louis approved a dedicated property tax assessment to establish the Community Mental Health Fund (CMHF) for St. Louis City residents. Ten years later, in 2004, voters in the City of St. Louis approved another dedicated property tax assessment to establish the Community Children's Services Fund (CCSF). The monies assessed are disbursed through a competitive application process and granted to non-profit organizations that provide children's services and behavioral health services (including mental health and substance use) for City residents across all ages.

MHB actively pursues other sources of funding to supplement local tax dollars. Currently MHB serves as the lead grantee for two Federal collaborative grants. The first is the St. Louis System of Care (SOC) a network of institutions, government agencies, and youth and family representatives committed to making sure children and youth get the mental health care they need to thrive. The second is the St. Louis Survivors Partnership and Care Access for New Americans, a collective approach to providing social and behavioral health support to immigrants and refugees in St. Louis - particularly those who have survived torture.

The funds administered by MHB are intended to supplement, not replace, other existing resources with the aim of increasing impacts that would not otherwise be possible. As good stewards of public funds, MHB uses an outcome-focused approach, investing in projects that are able to show measurable and verifiable changes in the lives of those they serve.



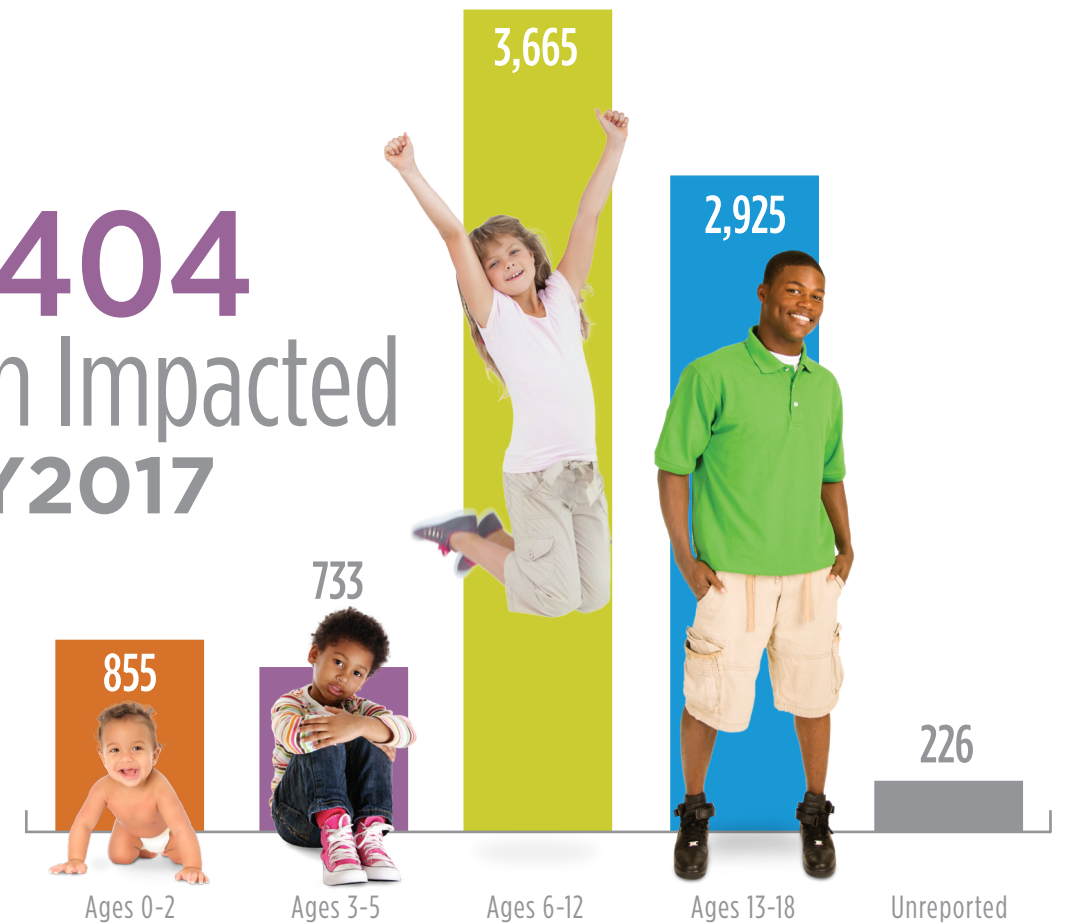
community children's servicesfund

"Children don't know how to ask for what they don't know they need. Their asking comes in the form of behavior."

– Bonnie Harris

The Community Children's Services Fund is committed to improving the wellbeing of children in the City of St. Louis. This is accomplished through participation in community collaborations that support the development of a coordinated system of care for children, as well as investing in a wide range of quality community programs from prevention to treatment, chosen through a rigorous application process. Funded programs address the social, emotional and behavioral health needs of City children, birth through age 18.

8,404
Children Impacted
FY2017



OUTCOMES:



1,026

children and youth were positively engaged in school or on track to graduate high school



1,436

youth developed leadership and job skills



4,320

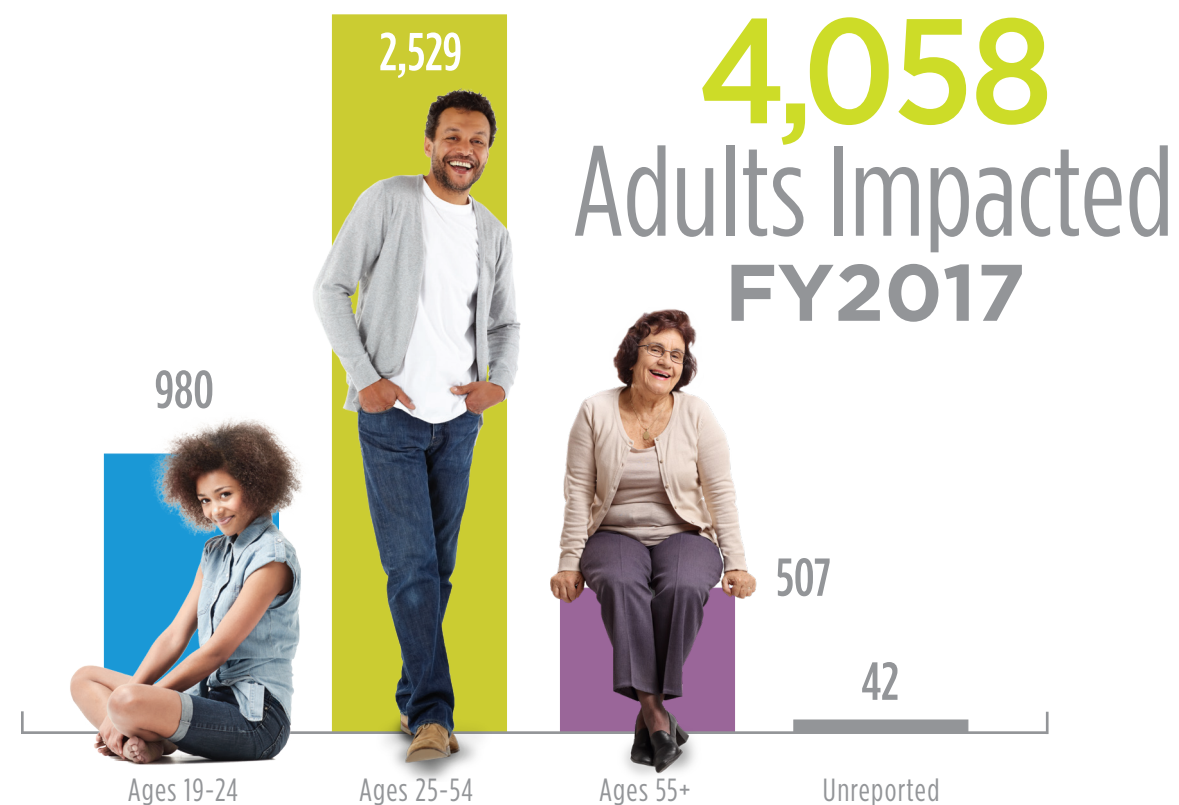
children were safe and nurtured with healthy connections to others in their homes, schools and community

community mental health fund

"Healing doesn't mean the damage never existed. It means the damage no longer controls our lives."

– Akshay Dubey

The Community Mental Health Fund invests in accessible, high quality behavioral health and substance abuse recovery services. The evidence-based practices are effective, efficient and economical and lead to measurable outcomes that impact the overall quality of life for City residents.



OUTCOMES:



956

adults identified, prevented, and/or addressed behavioral health conditions through early intervention



877

adults improved their mental health and/or reduced substance use



195

adults with severe and persistent mental illness improved their daily functioning, housing stability, and/or employment

federal operating grants



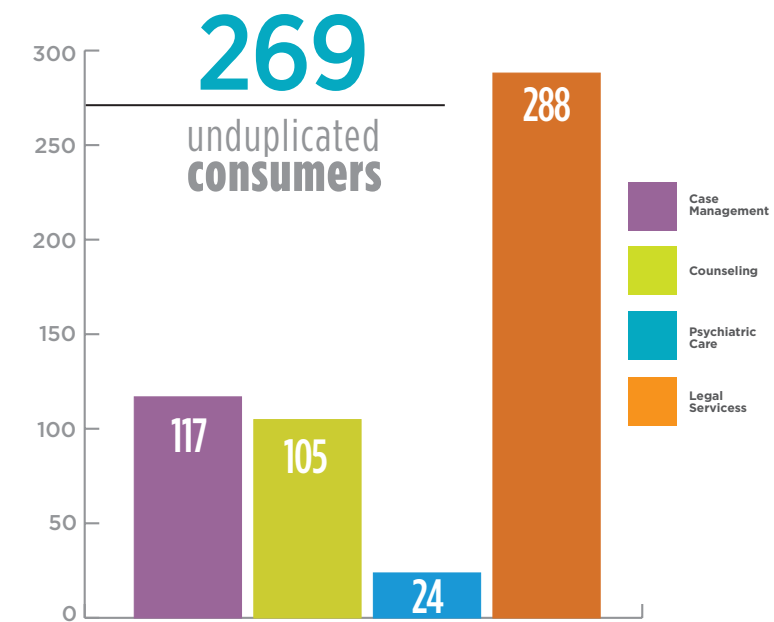
U.S. Department of Health and Human Services (HHS)

Office of Refugee Resettlement Survivors of Torture Program and Care Access for New Americans (CANA)

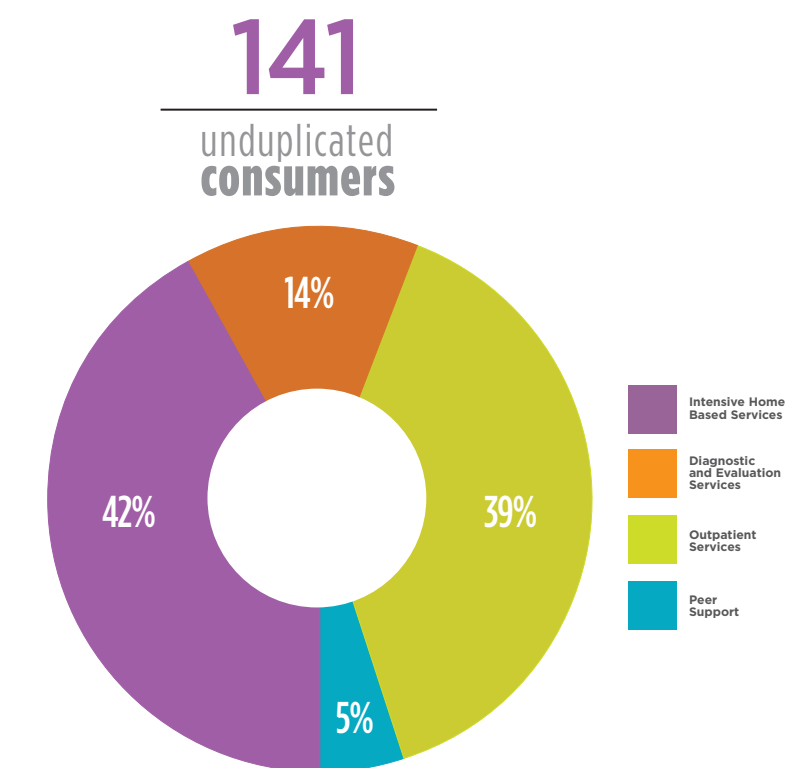
For nearly 17 years, Saint Louis Mental Health Board has developed and led the Survivors of Torture Program in concert with CANA which together have formed a holistic system of mental health, legal and related supports for a large and culturally diverse population of new immigrants, refugees and asylum seekers, drawn from the estimated 10,000 survivors of state-sponsored torture who have found a home in the St. Louis area. Blending local and federal funds, the Survivors Partnership has adapted evidence-based programs such as Motivational Interviewing to help the survivor population achieve and sustain progress toward recovery. Direct services are managed and delivered by Bilingual International Assistant Services with support from International Institute of St. Louis and Language. Access. Multicultural. People. (LAMP).

St. Louis Regional System of Care

MHB administers a four-year Cooperative Agreement from the Substance Abuse and Mental Health Services Administration to support the St. Louis Regional System of Care (SOC). The purpose of the Cooperative Agreement is to enhance and expand the children's mental health system of care in St. Louis City and County. A system of care is a coordinated network of services and supports that builds meaningful partnerships with families and youth in order to help youth with serious emotional disturbance function better at home, in school, in the community, and throughout life.



Office of Refugee Resettlement/Care Access for New Americans



System of Care:

Percentage of direct service dollars allocated to critical gaps in the Children's Mental Health Service Array targeted to those with serious emotional disturbances

financials

FY17 July 1, 2016 - June 30, 2017

Condensed Financial Statement

Assets and Deferred Outflows

Cash and Investments	\$19,895,213
Grants and Taxes Receivable	\$235,273
Forgivable Loans	\$1,468,158
Other	\$177,361
Total Assets	\$21,776,005
Deferred Pension Contribution Outflows	\$221,363
Total Assets and Deferred Outflows	\$21,997,368

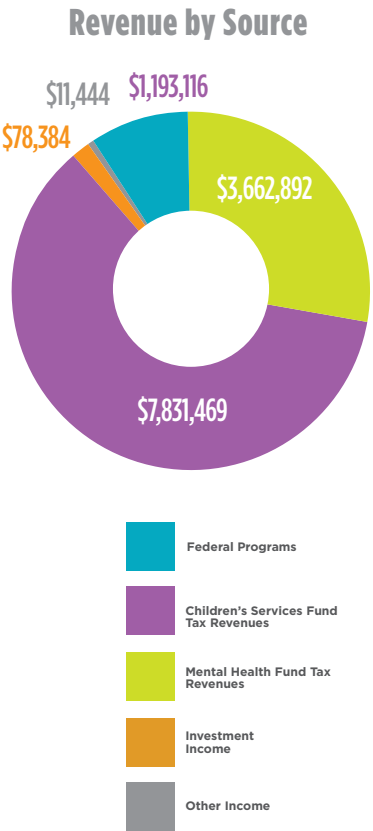
Liabilities, Deferred Inflows and Net Position

Liabilities and Net Position

Accounts and Grants Payable	\$198,259
Liabilities	\$695,043
Total Liabilities	\$893,302

Deferred Inflows

From Pension Investment Return & Plan Experience	\$16,635
Net Position	\$21,087,431
Total Liabilities, Deferred Inflows and Net Position	\$21,997,368



Condensed Statement of Revenues, Expenses and Changes in Net Position

Revenues

Federal Programs	\$1,193,116
Mental Health Fund Tax	\$3,662,892
Children Services Fund Tax	\$7,831,469
Investment Income	\$78,384
Other Income	\$11,444
Total Revenues	\$12,777,305

Expenses

Community Investments/Grants

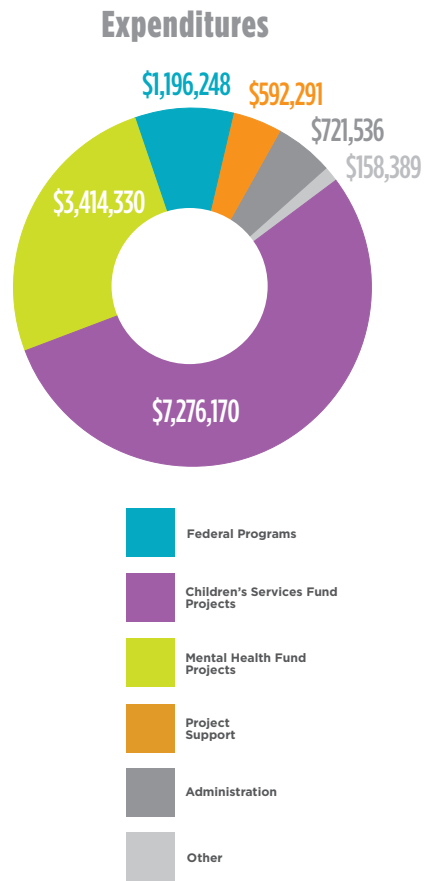
Children's Services Fund Projects	\$7,276,170
Mental Health Fund Projects	\$3,414,330
Federal Programs	\$1,196,248
Project Support	\$592,291
Subtotal	\$12,479,039

General Administration

Administration	\$721,536
Other	\$158,389
Subtotal	\$879,925

Total Expenses

Excess of Expenses over Revenues	(\$581,659)
Net Position, Beginning of Year	\$21,669,090
Net Position, End of Year	\$21,087,431



who we fund

22nd Missouri Judicial Circuit Court, Family Court,
Juvenile Division
Aim High St. Louis
ARCHS
Behavioral Health Response
Big Brothers Big Sisters of Eastern Missouri
Bi-Lingual International Assistant Services
Children's Advocacy Services of Greater St. Louis
City of St. Louis Department of Human Services
Covenant House Missouri
Employment Connection
Epworth Children & Family Services
Family Care Health Centers
FamilyForward
Fathers' Support Center
Foster & Adoptive Care Coalition
Generate Health STL
Great Circle
Independence Center
International Institute of St. Louis

Kids in the Middle
Legal Services of Eastern Missouri
Lutheran Family and Children's Services of Missouri
Marian Middle School
MERS/Missouri Goodwill Industries
Missouri Department of Mental Health
Myrtle Hilliard Davis Comprehensive Health Centers. Inc.
Northside Youth And Senior Services Center, Inc.
Nurses for Newborns
Our Little Haven
Places for People
Preferred Family Healthcare
Queen of Peace
Safe Connections
Saint Louis University
St. Francis Community Services
St. Louis Internship Program
United 4 Children
Voices for Children
Washington University: The SPOT



board of trustees

Carolyn Jackson, Chair

Manager – Upward Bound/TRIO –
SLCC Forest Park

*** Roy Wilson, (Former Chair)**

Medical Director – St. Louis
Psychiatric Rehabilitation Center

Linda Grayson, Vice Chair

Manager – May Company (Retired)

David Laslo, Secretary/Treasurer

President –
Strategic Research & Analytics

Marylou Calzaretta

Corporate Counsel – Esse Health

Terrell Carter

Director of Contextualized Learning
& Assistant Professor –
Central Baptist Theological Seminary

Steve Doss

President – S.J. Associates (Retired)

Marguerite Grandelious

School Counselor –
Ritenour School District (Retired)

Jennifer Matthew

Attorney and Director of Mediation –
Alaris

Phil Minden

Senior Vice President –
Sterling Bank

Nina North Murphy

Senior Corps Program Director –
Kingdom House
Senior Companion Program

Carla Rose

CEO – AerialSync
(UAV Software and Service Co.)

Donna Schmitt

Partner – Armstrong Teasdale, LLC

staff

Jama Dodson – Executive Director

Cassandra Kaufman – Deputy Director

Kristin Cowart – Project Director

Sue Culli – Logistics Coordinator

Tom Giles – Administrative Coordinator

Serena Muhammad – Director of
Strategic Initiatives

Jennifer Rogers – Senior Project
Director of Information Services

Carter Whitson – Project Director

Katie Zitt – Accountant



* Resigned due to relocation